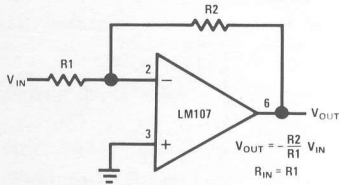


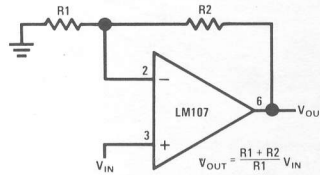


op amp circuit collection

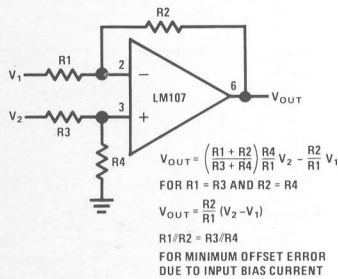
section 1 — basic circuits



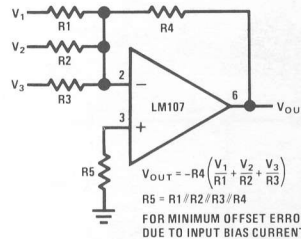
Inverting Amplifier



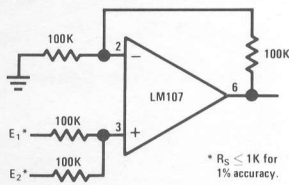
Non-Inverting Amplifier



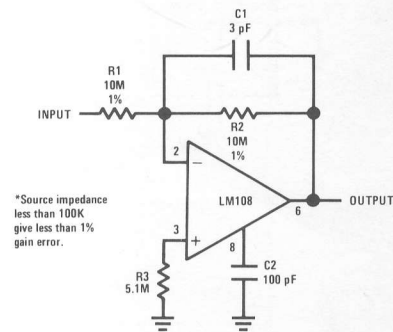
Difference Amplifier



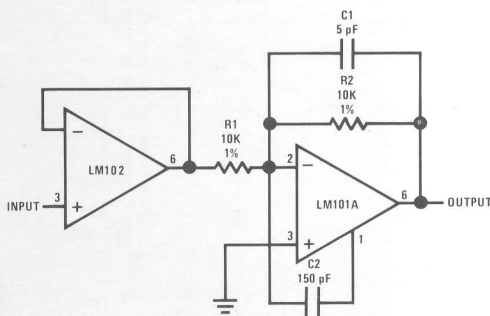
Inverting Summing Amplifier



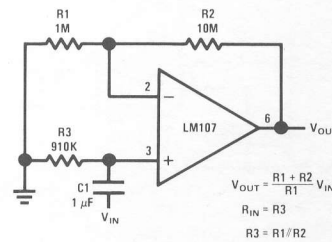
Non-Inverting Summing Amplifier



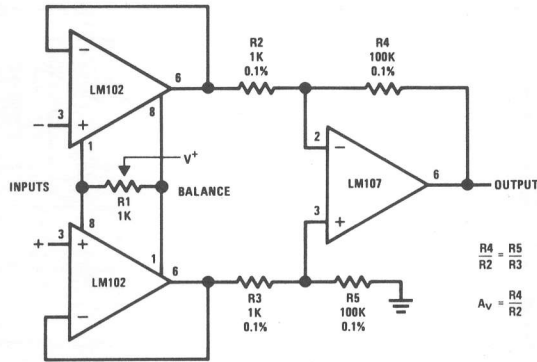
Inverting Amplifier with High Input Impedance



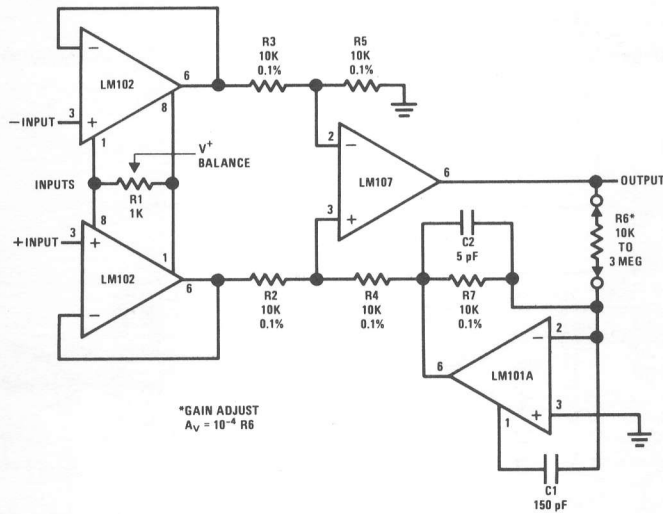
Fast Inverting Amplifier With High Input Impedance



Non-Inverting AC Amplifier



Differential-Input Instrumentation Amplifier



Variable Gain, Differential-Input Instrumentation Amplifier